



Thank you for purchasing this product!

Technical parameters:

- AC adapter: 230 VAC 50 Hz (IN), 5 VDC (OUT).
- Operating temperature: -30°C to +70°C

INSTALLATION INSTRUCTION:

The display can be installed both indoor and outdoor. Installation must be performed with power supply disconnected. The display can be mounted with the use of mounting supports that are provided with the display as a standard Wall mounting holes can be marked out by putting the display with the supports to the wall. Programming the display is carried out with the use of a computer software that is supplied with the equipment.

WARNING:

- Electrical installation may only be carried out by a qualified electrician.
- Do not use AC adapters other than provided by the producer.
- Make sure to position the power cable so that it cannot be stepped on, tripped over, and subjected to damage or stress.
- Do not disassemble the AC adapter yourself. If there seems to be a malfunction, contact the producer – breaching warranty seals will lead to a refusal of warranty service.
- When the keyboard is disconnected and reconnected while entering a text, a further work is impossible. In such situations the power supply should be switched off for 15 seconds and then switched back on (it causes the display to reset).

Switching the display on and off.

Switching ON/OFF takes place simply at the time of connecting/removing the power plug in/from the AC socket. Do not switch off the display while saving data to memory as all the data may be lost.

System requirements:

- Operating system: Windows XP/Vista/7/8

First steps with the computer software.

The PASSWORD required by the software: 168

The folder with the software can be found on the CD/DVD disc included. **In order to start working please double click the “Setup.exe” file and install the software.** After the software has been launched click the “File” tab and choose “New screen”. You will see the display configuration window shown in the figure 1.

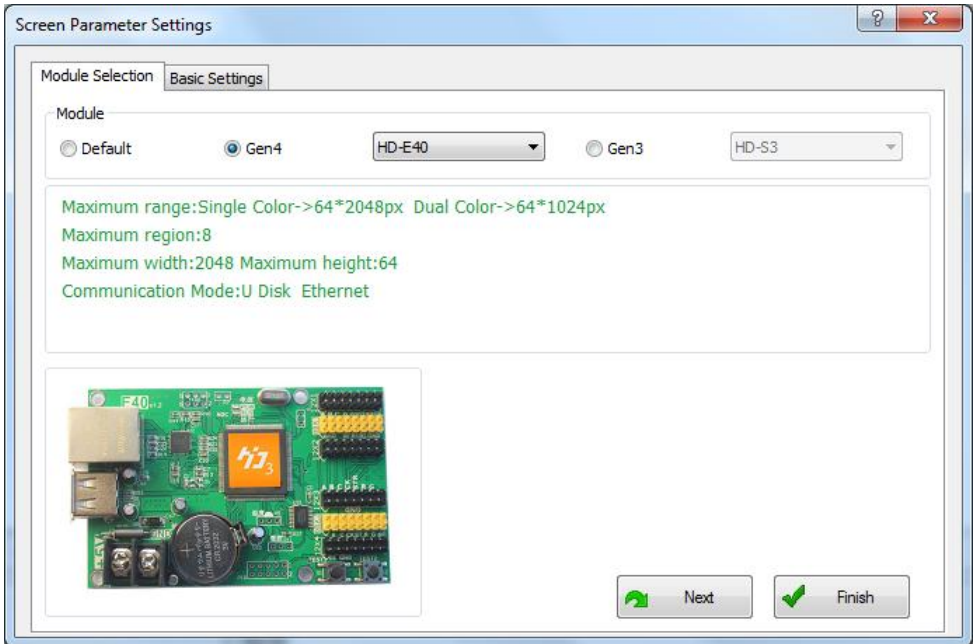


Fig. 1. Starting window – controller selection.

In this window, choose the “Import option”. Then there will appear a dialog window, where you need to select the “**Display configuration.srca**” file present on the CD/DVD disc supplied with the equipment. Select this file, click “Open” and confirm your choice by clicking the “OK” button. After that action has been performed, the software is configured to work with the given display model.

In the next step, move to the main window shown in the figure 2.

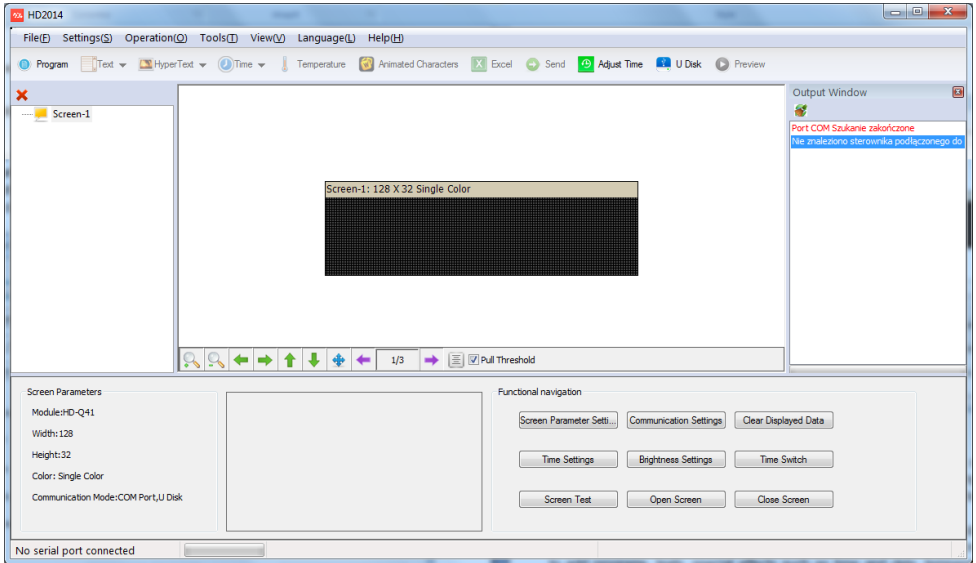


Fig. 2. Main window.

In the main window you can start designing your advertising spot. Each spot consists of programs. Playing a spot is nothing more than displaying the programs consecutively, one after another. Each program in a project must contain at least one element, e.g. single-line text, multitext, time and date, temperature, etc.

The main window can be divided into three groups. In the upper part of the window there is the toolbar that allows management of the project. The toolbar allows you to add programs, texts, special effects such as time and date, temperature, etc. to the project tree. It also allows you to send and export data. With the use of the available options you can also set time and check the preview of a finished spot.

In the left part of the main window there is the spot tree, where all the programs constituting the given spot are shown. The tree allows you to easily move between the project and edit any of its elements.

The last part of the main window is the screen settings panel. Here you can determine all parameters available to particular programs and manage the additional options.

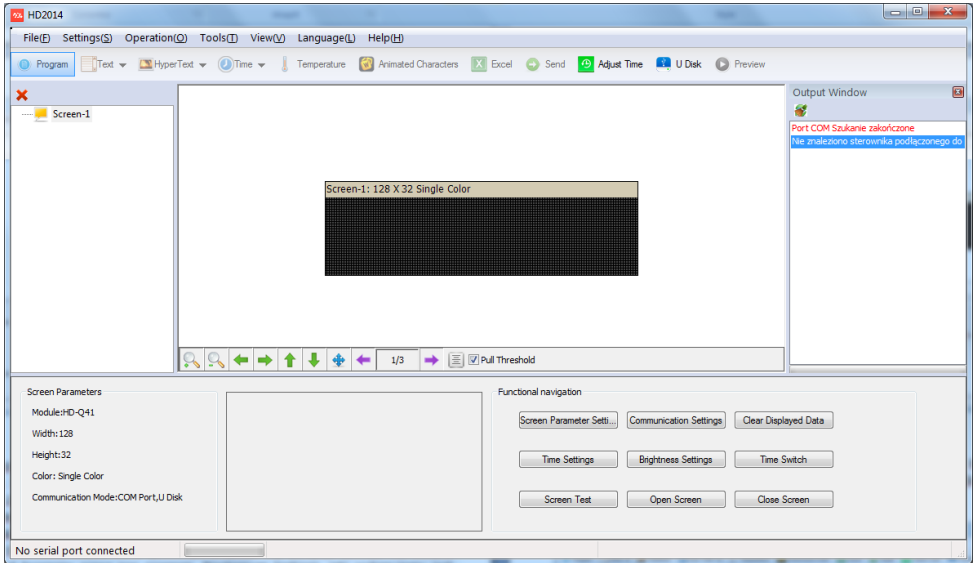


Fig. 3. Adding a program.

Creating an advertising spot starts with adding the first program by clicking the “Program” button, which can be seen in the figure 3. Although programs you create are numbered automatically, each program as well as other elements of your spot tree can be renamed by right-clicking a given element and choosing the “Rename” option.

In the middle part of the main window there is a preview of the panel where the created program can be seen. The next thing to do is to add any program element from the toolbar. To present the possibilities of the software use the “Text” element. To place a text in the program click the “Text” icon ->> “Single-line text”, as shown in the figure 4.

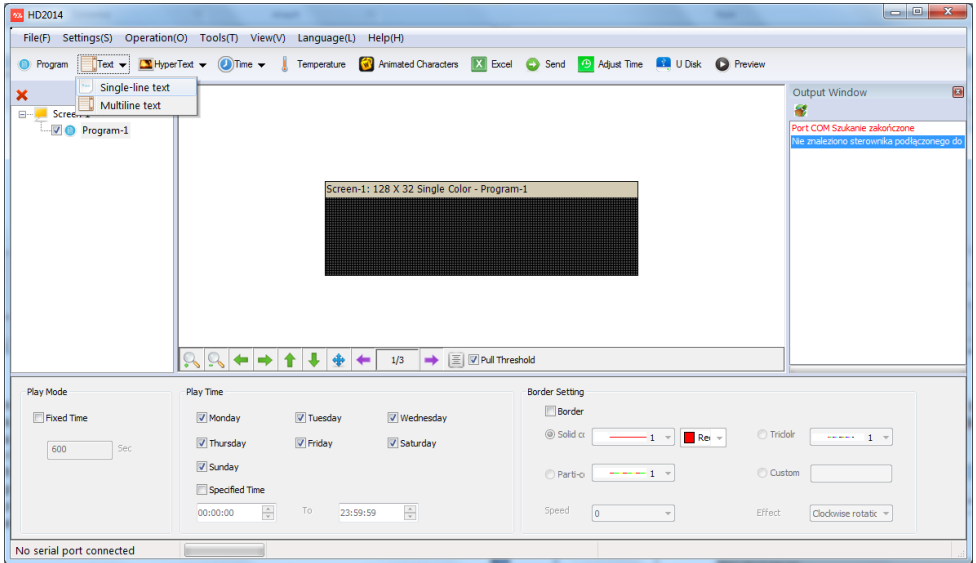


Fig. 4. Adding a text.

After the text is added, in the bottom part of the main window the edition window appears. In the black field you can type a text, which will also appear in the preview as can be seen in the figure 5.

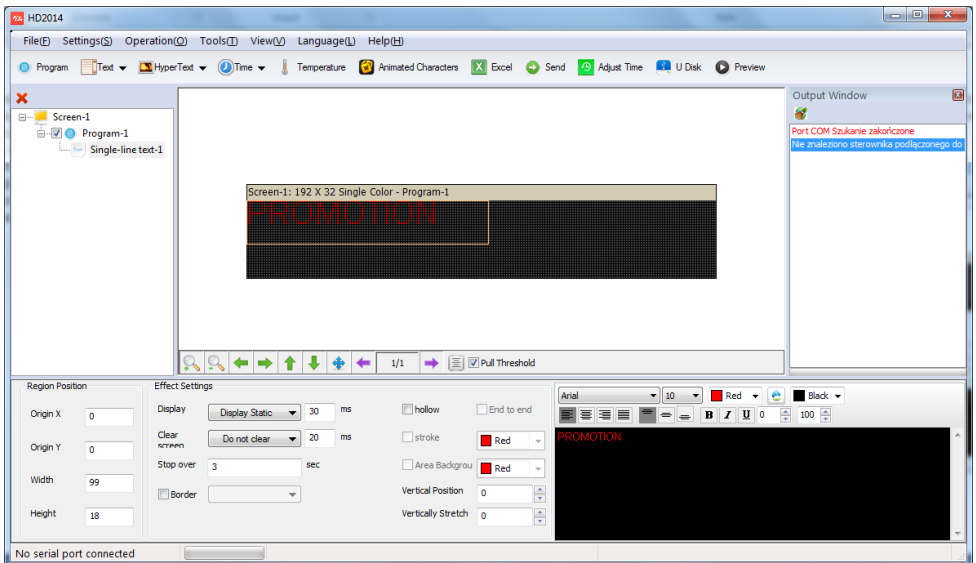


Fig. 5. Adding a program.

In the edition window the font and its size can be changed. You can choose between bold, italic, and underline. You can also choose the position of the text. In the “Effect Settings” window you can choose the text IN/OUT effects and the effect pause time. In the preview window, or in the “Region Position” you can set the position, width, and height of the given region. All the available options allow to effectively manage the effects. Example text settings have been show in the figure 6.

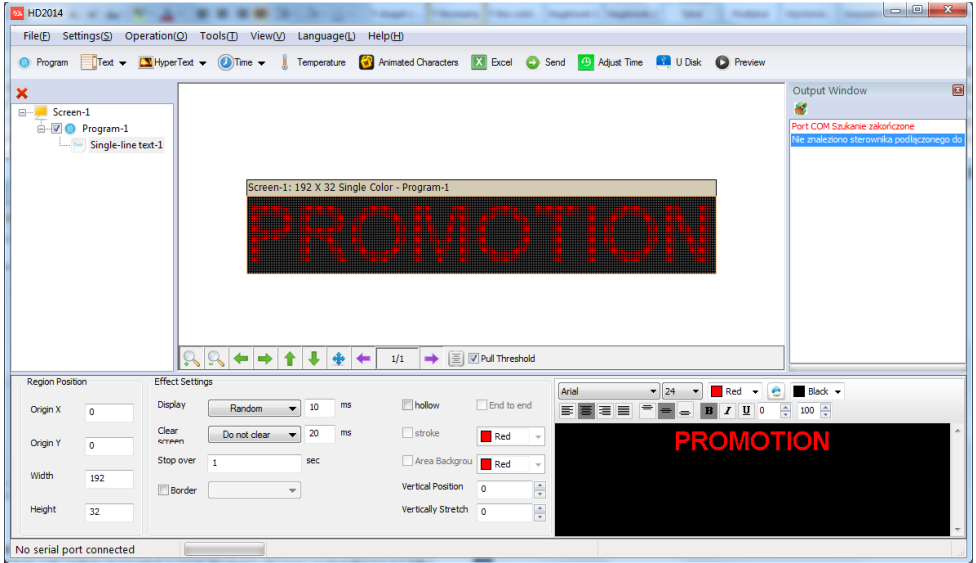


Fig. 6. Example effect settings.

The software also allows to place 2 or more text lines on the screen. In order to do so, you should use the option where the display screen can be divided into several parts, which will have individual texts and settings. To display two texts, e.g. PROMOTION and SPECIAL OFFER, one under another, click “Text” and type PROMOTION. Now set the display region for that text. It can be done in two ways. The more comfortable one is to set the region borders with a mouse in the preview window. The other one is to use the “Region Position” and to enter the position (Origin X and Origin Y) and dimensions (Width and Height) of a given layer oneself. After the PROMOTION text is positioned in the upper part of the screen, proceed with adding the SPECIAL OFFER text below. Do it the same way as with the first text, but position the region under the first one. While adding and creating several regions within a single program, remember that the individual regions must not overlap.

In a similar way next programs with text, as well as the options with time, date, temperature, or graphics can be added.

In order to add some graphics to our spot, a proper file should be first prepared with the use of graphics software. While creating graphics remember to adjust its resolution to the resolution of your display. To create graphics use only black and white. White will be

seen on the display as an illuminating diode. When the file is ready you can place it in your project. To do so, you can use the option to place graphics in a text, or use the multitenx function.

That is the way to create a complete spot. In the figure 7 you can see an example of a spot tree.

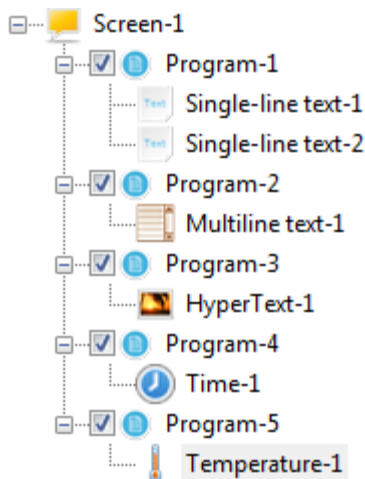


Fig. 7. Example of a spot tree.

Sending data to the display.

Transferring data to the display can be done in different ways, depending on the display model and the option chosen.

One of them is control with a LAN cable. Here you click on the “Send” button available in the software.

The other way is to transfer the data on a flash drive (optional feature). Here you first send the prepared spot to a flash drive by clicking the “U disk” button and then plug the flash drive to the USB socket at the end of a cable that comes out of the display. After the data is read, you can unplug the flash drive.

The information presented above will help you familiarize with the software. Do not hesitate to make use of the available options and settings to learn the software’s potential.

We suggest that you try to create effective spots, with the use of many effects that will win much attention and make your advertisement more attractive. We hope that our product is going to satisfy your expectations and serve you well for a very long time bringing you many benefits.